

GLADSTONE



QINGDAO GLADSTONE INDUSTRIAL CO.,LTD

T:0086-532-86760839

M:0086-15064837919

A:Room 504, No.1166 Li Jiang xi road, Rio Carnival ,Qingdao Shandong China.

E:info@gladstonetire.com export@gladstonetire.com



Adopt solid rib design, improve the turning performance of high speed driving, improve the driving stability and safety.



Adopt asymmetric four main groove design. Superior drainage performance, improve wetland control performance, excellent driving performance on wet slippery road in rainy days.



Design of pitch width. Uniform pitch size, long-term static performance can be maintained to ensure consistent wear of new and after use tires.

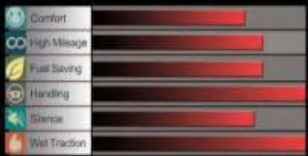


Due to the application of the side wall strengthening technology, when the tires lose air, it can also give the vehicle strong support to ensure the safety of driving.



Ordinary tires are completely supported by air pressure. When the tires lose air, the wheels will have severe friction with the tires and be damaged, which will bring serious safety risks to the vehicles.

FRO1
SPECIAL FOR HIGH-END CAR



SIZE	Load Index	Speed Rating	Standard Rim	Section Width (mm)	Overall Diameter (mm)	Max.load kg	Max.pressure kpa	U.T.Q.G
★ 225/50R17	94	W	7.0J	233	658	670	300	420AA
225/55RF17	97	W	7.0J	233	680	730	300	420AA
245/45ZRF18	96	W	8.0J	243	677	710	300	420AA
★ 235/55R18	100	V	7.5J	245	715	800	300	420AA
★ 245/50R18	100	W	7.5J	253	703	800	300	420AA
★ 255/50R19	103	W	8.0J	265	739	875	300	420AA

★ : under development



Adopt sports profile with maximum rigidity and aggressive appearance.



Big shoulder block pattern with big sipes can avoid uneven wear and effectively reduce the heating up and resonance.

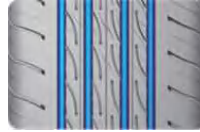


Asymmetric tread design and low rolling resistance provides excellent handling performance and outstanding driving properties on dry & wet road surfaces

SIZE	Load Index	Speed Rating	Standard Rim	Section Width (mm)	Overall Diameter (mm)	Max.load kg	Max.pressure kpa	U.T.Q.G
265/40R22	106	V	9 1/2J	271	771	950	340	420AA
265/30ZR22	97	W	9 1/2J	271	719	730	340	420AA
285/35ZR22	106	W	10J	290	759	950	340	420AA
305/35R24	112	V	11J	313	824	1120	340	420AA



Densely distributed blocks efficiently offset noises made by air emission in the grooves.



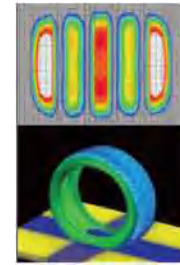
Four longitudinal groove design to ensure good drainage performance on wet surface



Widen central Pattern Rib to ensure the handling at the time of intense driving.



Optimal design of pattern order with changing pitches efficiently decreases vibrate and noise



Use the leading method FEA, Finite Element Analysis, and get a optimized pitch arrangement and displacement.

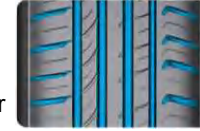
SIZE	Load Index	Speed Rating	Standard Rim	Section Width (mm)	Overall Diameter (mm)	Max.load kg	Max.pressure kpa	U.T.Q.G
225/35ZR20	90	W	8J	230	666	600	340	420AA
245/30ZR22	92	W	8V2J	248	707	630	340	420AA
255/35ZR20	97	W	9J	260	686	730	340	420AA
265/35R22	102	V	9%J	271	745	850	340	420AA
275/40ZR20	106	W	9 ¹ / ₂ J	278	728	950	340	420AA
305/40R22	114	V	11J	313	803	1180	340	420AA
305/45R22	118	V	10J	303	833	1320	340	420AA



VANTAGE H-7
SPECIAL FOR MIDDLE AND HIGH-END CAR



Asymmetric pattern, big shoulder block, excellent control on dry road, wide grooves helps excellent water drainage.



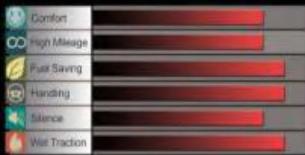
Wider lateral grooves design helps improve the performance of drainage and wet grip.

SIZE	Load Index	Speed Rating	Standard Rim	Section Width (mm)	Overall Diameter (mm)	Max.load kg	Max.pressure kpa	U.T.Q.G
175/65R14	82	H	5J	177	584	475	300	420AA
175/65R14	86	T	5J	177	584	530	340	420AA
195/65R15	91	H	6J	201	635	615	300	420AA
195/65R15	95	H	6J	201	635	690	340	420AA
195/60R15	88	V	6J	201	615	560	300	420AA
205/60R15	91	H	6J	209	627	615	300	420AA
205/65R15	94	H	6J	209	647	670	300	420AA
205/70R15	96	T	6J	209	669	710	300	420AA
215/65R15	96	H	6 1/2 J	221	661	710	300	420AA
195/60R16	89	H	6J	201	640	580	300	420AA
205/50R16	87	V	6V2J	214	612	545	300	420AA
205/55R16	91	V	6V2J	214	632	615	300	420AA
205/55R16	91	W	6V2J	214	632	615	300	420AA
205/60R16	92	H	6J	209	652	630	300	420AA
205/65R16	95	H	6J	209	672	690	300	420AA
215/55R16	97	W	7J	226	642	730	340	420AA
215/60R16	95	H	6V2J	221	664	690	300	420AA
215/65R16	98	H	6V2J	221	686	750	300	420AA
225/55R16	95	W	7J	233	654	690	300	420AA
225/60R16	98	V	6V2J	228	676	750	300	420AA
235/60R16	100	H	7J	240	688	800	300	420AA
195/55R16	87	V	6.0J	201	620	545	300	420AA
205/45R16	87	V	7.0J	206	590	545	340	420AA
205/55R17	94	V	6.5J	214	658	670	340	420AA
245/45R17	99	W	8.0J	243	652	775	340	420AA
215/50R17	94	W	7 1/2 J	225	634	670	340	420AA
215/60R17	92	W	8J	230	637	630	340	420AA
225/45ZR17	94	W	8J	236	669	670	300	420AA
225/45ZR17	97	V	7%J	245	693	730	300	420AA
225/40ZR18	95	W	8V2J	248	680	690	340	420AA
235/45ZR18	100	V	7%J	245	715	800	300	420AA
235/50R18	87	V	6.0J	201	620	545	300	420AA
235/55R18	99	W	8.0J	243	652	775	340	420AA
225/60R18	100	H	6.5J	228	727	800	300	420AA
215/50R18	92	W	7.0J	226	673	630	300	420AA
215/55R18	99	H	7.0J	226	693	690	300	420AA
225/50R18	99	W	7.0J	233	683	775	340	420AA
225/55R18	98	H	7.0J	233	705	750	300	420AA
245/50R18	104	V	7.5J	253	703	900	340	420AA
255/45R18	103	W	8.5J	255	687	872	340	420AA
235/50R19	99	V	7.5J	245	719	775	300	420AA
235/35R19	91	W	8.5J	241	647	615	340	420AA
255/45R19	104	W	8.5J	255	713	900	340	420AA
225/45R19	96	W	7.5J	225	685	710	340	420AA
245/45R19	102	W	8.0J	243	703	850	340	420AA
255/40R19	100	W	9.0J	260	687	800	340	420AA
245/35ZR20	95	W	8.5J	248	680	690	340	420AA

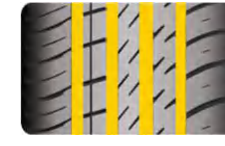


VANTAGE H-8

SPECIAL FOR HIGH-END CAR



Asymmetric pattern design provide a strong grip and confident maneuvering and tread even wearing during turning.



Four wide longitudinal groove design and wide contact patch helps to deliver a high speed performance and excellent water drainage



Angular sipes help reduce noise and provide comfortable riding.

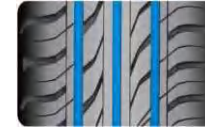


Special tread ingredient design with Silicon helps to- provide a good grip both on dry and wet road. Longer mileage.

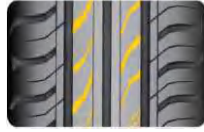
SIZE	Load Index	Speed Rating	Standard Rim	Section Width (mm)	Overall Diameter (mm)	Max.load kg	Max.pressure kpa	U.T.Q.G
195/50R15	82	V	6J	201	577	475	350	420AA
185/55R15	82	V	6J	194	585	475	350	420AA
195/55R15	85	V	6J	201	595	515	350	420AA
205/50R16	87	V	6.5J	214	612	545	350	420AA
215/55R16	97	W	7J	226	642	730	340	420AA
225/55R16	95	W	7J	233	654	690	350	420AA
195/50R16	88	V	6J	201	602	560	340	420AA
225/55R17	101	W	7J	233	680	825	340	420AA
205/40R17	84	W	7J	212	596	500	350	420AA
215/40R17	87	W	7.5J	218	604	545	350	420AA
215/45R17	91	W	7J	213	626	615	340	420AA
225/45R17	91	W	7.5J	225	634	615	350	420AA
235/45R17	97	W	8J	236	644	730	340	420AA
205/50R17	93	W	6.5J	214	638	650	340	420AA
225/50R17	98	W	7J	233	658	750	340	420AA
235/50R17	96	W	7.5J	245	668	710	350	420AA
215/55R17	98	W	7J	225	668	750	340	420AA
235/55R17	99	W	7.5J	230	690	775	350	420AA
225/45R18	95	W	7.5J	241	659	615	350	420AA
225/40R18	92	W	8J	243	637	630	340	420AA
235/40R18	95	W	8.5J	218	645	690	350	420AA
245/45R18	100	W	8J	248	677	800	350	420AA
215/35R18	84	W	7.5J	248	607	500	350	420AA
245/40R18	97	W	8.5J	201	653	730	350	420AA
245/35R20	95	W	8.5J	233	680	690	340	420AA



Big shoulder block pattern with small sipes can avoid uneven wear and effectively reduce the heating up and resonance.



Continuous longitudinal groove design for excellent water drainage, so provide good grip and maneuvering on wet road.



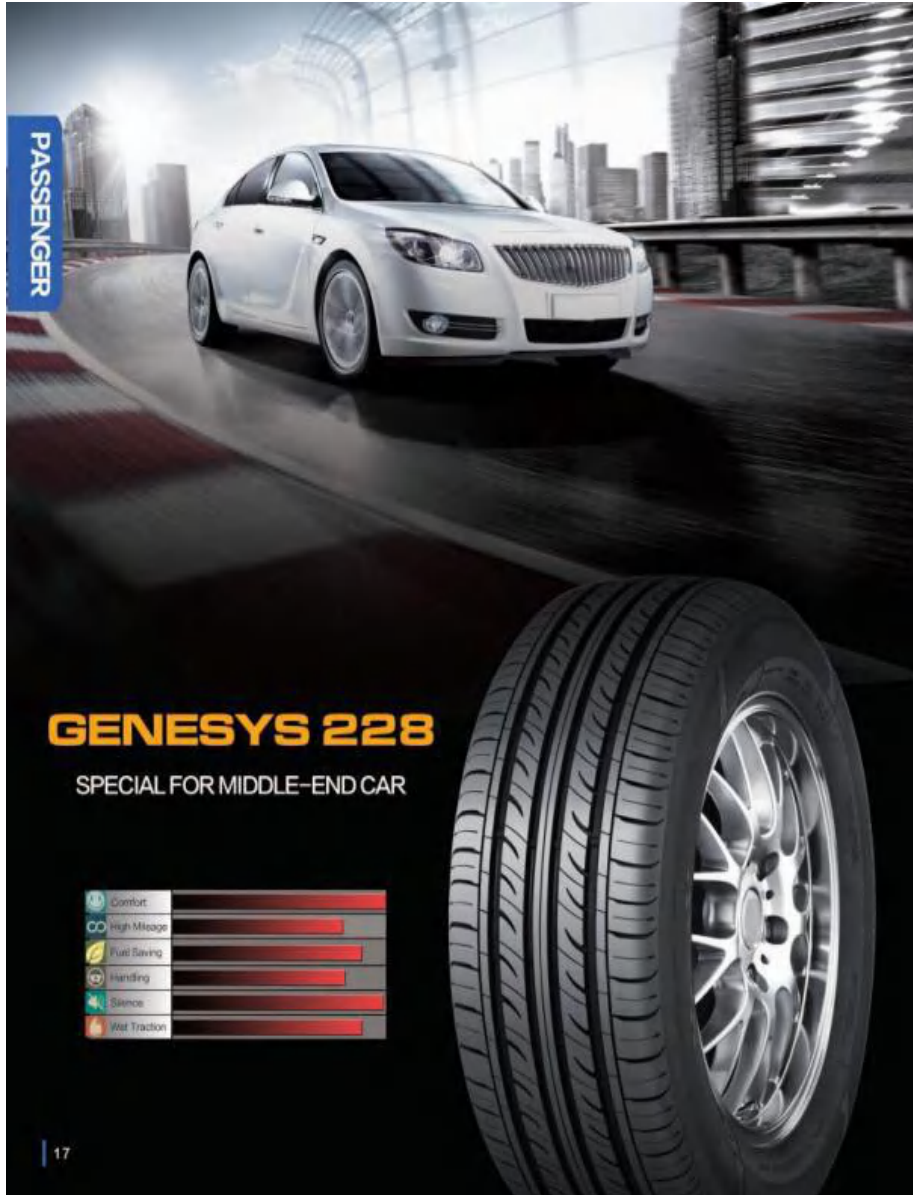
Lateral small sipes design enhance the maneuvering performance.



Use the FEA, Finite Element Analysis, and get a optimized pitch arrangement, displacement to reduce noise.

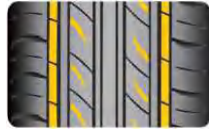
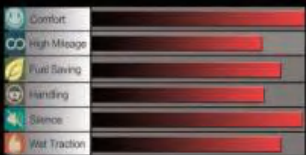
SIZE	Load Index	Speed Rating	Standard Rim	Section Width (mm)	Overall Diameter (mm)	Max.load kg	Max.pressure kpa	U.T.Q.G
175/60R13	77	T	5J	177	540	412	300	380AA
165/65R13	77	T	5.00B	170	544	412	350	380AA
155/70R13	75	T	4.5J	157	548	387	300	380AA
155/80R13	79	T	4.5J	157	578	437	300	380AA
155/65R13	73	T	4.5J	157	532	365	300	380AA
165/70R13	79	T	5.00B	170	562	437	350	380AA
165/70R13 *wsw	83	T	5.00B	170	562	487	340	380AA
175/70R13	82	H	5.00B	177	576	475	350	380AA
185/70R13	86	T	5.50B	189	590	530	350	380AA
185/60R14	82	H	5.5J	189	578	475	350	380AA
165/65R14	79	H	5J	170	570	437	350	380AA
175/65R14	82	H	5J	177	584	475	350	380AA
185/65R14	86	H	5.5J	189	596	530	350	380AA
165/70R14	81	T	5J	170	588	462	350	380AA
165/70R14	85	T	5J	170	588	515	340	380AA
175/70R14	84	T	5J	177	602	500	350	380AA
185/70R14	88	T	5.5J	189	616	560	350	380AA
195/70R14	91	T	6J	201	630	615	350	380AA
175/70R14C	91/93	S	5J	177	602	690/1435	375	380AA

PASSENGER

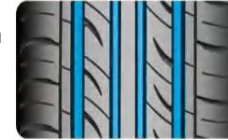


GENESYS 228

SPECIAL FOR MIDDLE-END CAR



Silent pitch arrangement, tread design of unequal pitch width, arrangement and displacement help to provide experience of quiet driving and effectively reduce tire resonant noise.



Four wide longitudinal groove design and wide contact patch helps to deliver a high speed performance and excellent water drainage



Wide central main rib design on tread center helps maintain a continuous and homolographic contact area for constant straight riding.



Use the leading method FEA, Evenly suffer the pressure, avoid uneven wear .Effectively reduce tyre resonant noise.Perfect high speed performance.

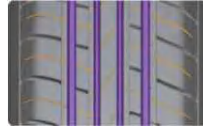
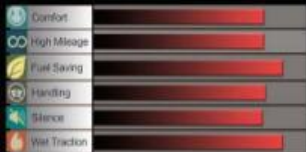
SIZE	Load Index	Speed Rating	Standard Rim	Section Width (mm)	Overall Diameter (mm)	Max.load kg	Max.pressure kpa	U.T.Q.G
205/60R14	88	H	6.0J	209	602	560	300	420AA
195/60R14	86	H	6.0J	201	590	530	350	420AA
205/70R14	93	T	6.0J	209	644	650	300	420AA
185/60R15	84	H	5.5J	189	603	500	350	420AA
195/60R15	88	V	6.0J	201	615	560	350	420AA
205/60R15	91	H	6.0J	209	627	615	350	420AA
185/65R15	88	H	5.5J	189	621	560	350	420AA
195/65R15	91	H	6.0J	201	635	615	350	420AA
195/65R15	95	H	6.0J	201	635	690	340	420AA
205/65R15	94	H	6.0J	209	647	670	350	420AA
215/60R15	94	H	6.5J	221	639	670	350	420AA
215/65R15	96	H	6.5J	221	661	710	350	420AA
205/70R15	96	T	6.0J	209	669	710	300	420AA
215/70R15	98	T	6.5J	221	683	750	300	420AA
205/55R16	91	V/W	6.5J	214	632	615	350	420AA
205/60R16	92	H	6.0J	209	652	630	350	420AA
205/60R16	96	H	6.0J	209	652	710	340	420AA
215/60R16	99	H	6.5J	221	664	775	340	420AA
225/60R16	98	V	6.5J	228	676	750	350	420AA
215/65R16	98	H	6.5J	221	686	750	350	420AA
205/65R16	95	H	6.0J	209	672	690	300	420AA
235/60R16	100	H	7.0J	240	688	800	300	420AA
225/60R17	99	H	6.5J	228	702	775	350	420AA

PASSENGER



GENESYS 208

ECONOMIC CAR TYRE



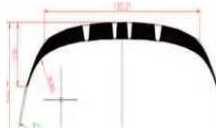
Four wider main grooves, much steel, improves wet grip on rainy days.



Shoulder reinforcing rib design to ensure handling performance as well as reducing noise.



Special for enabling high tire pressure and narrow tread design and low rolling resistance structure, reduce energy loss.



More reasonable crown radius design makes the tread contact ground pressure evenly distributed, prevents partial wear or other abnormal wear.

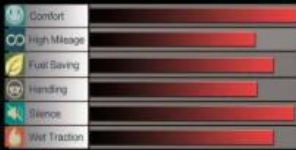
SIZE	Load Index	Speed Rating	Standard Rim	Section Width (mm)	Overall Diameter (mm)	Max.load kg	Max.pressure kpa	U.T.Q.G
175/70R13	82	T	5J	177	576	475	300	440AA
185/60R14	82	H	5.5J	189	578	475	300	440AA



PASSENGER

BP18

SPECIAL FOR MIDDLE-END CAR



The closed shoulder seam reduces the impact noise of the tire and also prevents irregular wear.



Small decorative shoulder pattern designed to absorb vibration and reduce noise



The reinforcing rib is designed to enhance the over-all rigidity of the pattern to ensure high speed safety



Through the noise simulation test, the groove distribution and groove angle which are closely related to the pattern noise are adjusted reasonably, and the pattern noise is reduced

SIZE	Load Index	Speed Rating	Standard Rim	Section Width (mm)	Overall Diameter (mm)	Max.load kg	Max.pressure kpa	U.T.Q.G
185/60R15	84	H	5.5J	189	603	500	300	420AA
185/65R15	88	H	5.5J	189	621	560	300	420AA
★ 195/55R15	85	H	6J	201	595	515	300	420AA
195/60R15	88	V	6J	201	615	560	300	420AA
195/65R15	91	H	6J	201	635	615	300	420AA
205/65R15	94	H	6J	209	647	670	300	420AA
★ 195/60R16	89	H	6J	201	640	580	300	420AA
235/60R16	100	V	7J	240	688	800	300	420AA
205/55R16	91	V	6.5J	214	632	615	300	420AA
205/60R16	92	H	6J	209	652	630	300	420AA
215/55R16	97	W	7J	226	642	730	340	420AA
215/60R16	95	H	6.5J	221	664	690	300	420AA
215/65R16	98	H	6.5J	221	686	750	300	420AA
225/55R16	95	W	7J	233	654	690	300	420AA

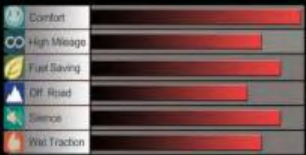
★ : under development



SUVL TR

SUSQUAH/T

SUV TYRE

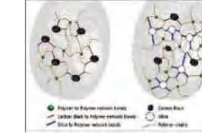


With 4-U-shaped groove design, the excellent water draining performance and gripping power on wet asured.

The big tread blocks on shoulder enhance tire strength so that the wear-resistance ability assured and uneven wearing avoided.



Multiple small tread pattern design improves driving comfort.



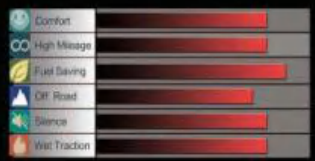
The silicon compounds also help reduce the friction between rubber molecules, energy loss, rolling resistance and enhance fuel economy.

SIZE	Load Index	Speed Rating	Standard Rim	Section Width (mm)	Overall Diameter (mm)	Max.load kg	Max.pressure kpa	U.T.Q.G
P215/75R15	100	T	6J	216	703	800	300	440AA
P225/70R15	100	H	6.5J	228	697	800	300	440AA
P225/75R15	102	T	6J	223	719	850	300	440AA
P235/75R15	105	T	6.5J	235	733	920	300	440AA
P225/70R16	103	H	6.5J	228	722	875	350	440AA
P235/70R16	106	H	7J	240	736	950	350	440AA
P245/70R16	107	H	7J	248	750	975	350	440AA
P245/75R16	111	T	7J	248	774	1090	350	440AA
P255/70R16	111	H	7.5J	260	764	1090	350	440AA
P265/70R16	112	H	8J	272	778	1120	350	440AA
P265/75R16	114	T	7.5J	267	804	1180	350	440AA
P215/70R16	100	H	6.5J	221	708	800	350	440AA
P235/65R17	104	H	7J	240	738	900	350	440AA
P245/65R17	107	H	7J	248	750	975	350	440AA
P265/65R17	112	H	8J	272	776	1120	350	440AA
P265/70R17	115	H	8J	272	804	1215	350	440AA
P245/70R17	110	H	7J	248	776	1060	350	440AA
P235/60R18	107	H	7J	240	739	975	340	540AA
P245/60R18	105	H	7J	248	751	925	300	540AA
P255/55R18	105	H	8J	265	737	925	300	540AA
P245/55R19	103	H	7.5J	253	753	875	300	540AA
P255/55R19	107	H	8J	265	763	975	300	540AA
P255/50R19	107	H	8J	265	739	975	340	540AA
P275/55R20	117	V	8.5J	284	810	1285	340	540AA
P275/45R20	110	V	9J	273	759	1060	340	540AA
LT265/75R16	123/120	S	7.5J	267	804	1550/1400	550	
LT245/75R17	121/118	S	7.0J	248	800	1450/1320	550	
LT265/70R17	121/118	S	8.0J	272	804	1450/1320	550	

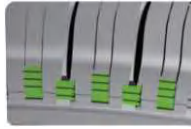


SUV/LTR

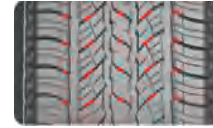
BV11+
SUV TYRE



Adopt zigzag main groove design. Four zigzag wide longitudinal grooves improve the drainage and grasping performance in rainy days.



The tread end adopts step design to increase the sidewall anti-scratch and anti-friction function.



Adopt reinforcing rib design, reinforcing rib design increases the rigidity of the pattern block and has the function of cleaning stone.



Optimal design of grounding shape. The tread end adopts step design to increase the sidewall anti-scratch and anti-friction function.

SIZE	Load Index	Speed Rating	Standard Rim	Section Width (mm)	Overall Diameter (mm)	Max.load kg	Max.pressure kpa	U.T.Q.G
★P215/60R17	104	V	7.5J	245	715	900	340	540AA
P215/65R17	99	H	6.5J	221	712	775	300	540AA
★P235/55R18	104	H	6.5J	221	690	710	300	540AA
P235/65R18	106	H	7J	240	763	950	300	540AA
★P265/70R18	116	H	8.0J	272	829	1250	300	540AA
P285/60R18	116	H	8.5J	292	799	1250	300	540AA
P265/60R18	110	H	8J	272	775	1060	300	540AA
P235/55R19	101	V	7.5J	245	741	825	300	540AA
P245/55R19	103	H	7.5J	253	753	875	300	540AA
P225/55R19	99	V	7J	233	731	775	300	540AA
P235/55R20	105	H	7.5J	245	766	925	340	540AA
★P245/45R20	103	V	8.0J	243	728	875	340	540AA
P265/50R20	111	V	8.5J	277	774	1090	340	540AA
P255/50R20	109	V	8J	265	764	1030	340	540AA
P285/50R20	112	H	9J	297	794	1120	300	540AA
★P255/45R21	102	V	8.5J	255	763	850	300	540AA
P275/45R21	110	V	9J	273	781	1060	340	540AA
P275/40R22	107	V	9.5J	278	779	975	340	540AA

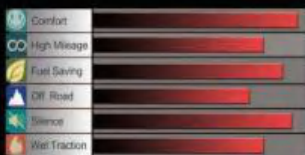
★ : under development



SUVLTR

VANTAGE H-6

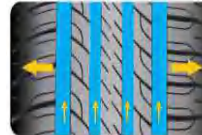
SUV TYRE



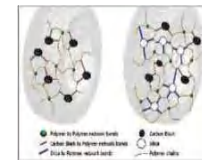
Variable pitch pattern ensures low resonance noise and outstanding riding comfort.



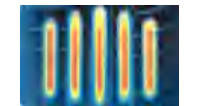
Continuous solid center rib providing stable contacting area enhance steering stability.



Four deepened circumferential tread grooves and open shoulder grooves provide excellent water evacuation performance and offer extraordinary behaviour on wet conditions.



Environmental low rolling resistant compound significantly reduce rolling resistance guarantee high fuel efficiency.



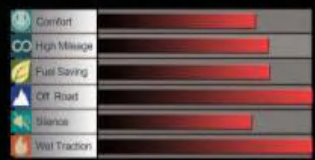
The optimized tyre outline design provides stable and bigger contacting area, ensuring good handling performance.

SIZE	Load Index	Speed Rating	Standard Rim	Section Width (mm)	Overall Diameter (mm)	Max.load kg	Max.pressure kpa	U.T.Q.G
225/65R17	102	H	6.5J	228	724	850	300	540AA
235/65R17	104	H	7.0J	240	738	900	300	540AA



SUV.LTR

ESPARTA A/T
ALL TERRAIN TYRE



Special Shoulder pattern block design, provide strong drive power and excellent off-road performance



Special pattern design helps reduce profile creep strain on uneven road and strengthen contact patch lateral rigidity.



High-tensile steel wires plus nylon reinforced ply, excellent anti-piercing resistance.

SIZE	Load Index	Speed Rating	Standard Rim	Section Width (mm)	Overall Diameter (mm)	Max.load kg	Max.pressure kpa
31*10.5R15LT	109	Q	8.5J	268	775	1030	350
LT225/75R16	115/112	Q	6J	223	744	1215/1120	550
LT245/75R16	120/116	Q	7J	248	774	1400/1250	550
LT215/85R16	115/112	Q	6J	216	772	1215/1120	550
LT235/85R16	120/116	Q	6.5J	235	806	1400/1250	550



Deep pattern + High saturation in contact with the ground + mixed pattern design + Wear resistant compound, for much longer mileage



Special contour profile, 2% more contact area, improve the mileage and turning performance.



Special pattern design, avoid stone or other thing clamped in the grooves

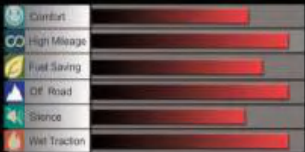


Perfect shape of ground contact, provide good wear-resisting property and stability

SIZE	Load Index	Speed Rating	Standard Rim	Section Width (mm)	Overall Diameter (mm)	Max.load kg	Max.pressure kpa	U.T.Q.G
31*10.5R15LT	109	Q	8.5J	268	775	1030	350	
LT215/75R15	100/97	S	6.0J	216	703	800/730	350	
LT235/75R15	104/101	Q	6.5J	235	733	900/825	350	
LT215/85R16	115/112	Q	6.0J	216	772	1215/1120	550	
LT235/85R16	120/116	Q	6.5J	235	806	1380/1260	550	
LT225/75R16	115/122	Q	6.0J	223	744	1215/1120	550	
LT245/75R16	120/116	Q	7.0J	248	774	1380/1260	550	
LT265/75R16	123/120	Q	7.5J	267	804	1550/1400	550	
LT285/75R16	122/119	Q	8.0J	286	834	1500/1360	450	
LT265/70R17	121/118	Q	8.0J	272	804	1450/1320	550	
LT275/65R18	123/120	Q	8.0J	279	815	1550/1400	550	
P215/70R16	100	S	6.5J	221	708	800	300	540AA
P255/70R16	111	S	7.5J	260	764	1090	300	540AA
P245/75R16	111	S	7.0J	248	774	1090	300	540AA
P235/70R16	106	S	7.0J	240	736	950	300	540AA
P265/70R16	112	S	8.0J	272	778	1120	300	540AA
P265/75R16	116	S	7.5J	267	804	1250	300	540AA
P265/70R17	115	S	8.0J	272	804	1215	300	540AA

X-TERRAIN BA80+

ALL TERRAIN TYRE

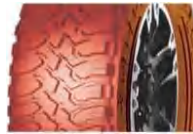




SUV/UTV

HALUDR BM81

MUD TERRAIN TYRE



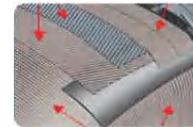
The balanced void ratio efficiently removes mud and dirt from the tread to provide continuous off-road traction.



The balanced void ratio efficiently removes mud and dirt from the tread to provide continuous off-road traction.



HALUDR mud terrain tire provide traction over various off-road terrain.



High-tensile steel wires plus nylon reinforced ply, excellent anti-piercing resistance.

SIZE	Load Index	Speed Rating	Standard Rim	Section Width (mm)	Overall Diameter (mm)	Max.load kg	Max.pressure kpa
31*10.5R15LT	109	Q	8.5J	268	775	1030	350
LT235/75R15	104/101	Q	6.5J	235	733	900	350
LT245/75R16	120/116	Q	7J	248	774	1380	550
★LT285/75R16	120/117	Q	8.0J	272	776	1400	550
★LT265/65R17	126/123	Q	8.0J	286	834	1700	550
★LT265/70R17	121/118	Q	8.0J	272	804	1450	550

★ : under development



DurableMax
RS01



轻卡商务系列 (LTR 系列) →

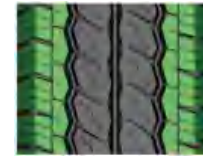
DurableMax RS01 is specially designed for commercial vans and light trucks. It is suitable for overload conditions and brings benefit.



Two circumferential central ribs provide super wear-resistance.



Convex tread blocks provide excellent traction and prevent sideslip.



Circumferential tread blocks on shoulders deliver excellent stability and handling.



Special outline avoid eccentric wear.

SIZE	Load Index	Speed Rating	Standard Rim	Section Width (mm)	Overall Diameter (mm)	Max.load kg	Max.pressure kpa
145R12C	80/78	R	4	157	537	450/425	350
155R12C	88/86	R	4.5	165	550	560/530	450
165R13C	94/93	R	4.5	170	594	670/650	450
165/70R13C	88/86	R	5	178	562	560/530	375
175R14C	99/98	R	5	177	634	775/750	450
175/70R14C	95/93	R	5	188	602	690/650	375
185R14C	102/100	R	5.5	198	650	850/800	450
195R14C	106/104	R	5.5	196	666	950/900	450
195R15C	106/104	R	5.5	201	693	950/900	450
195/70R15LT	99/96	R	6	201	655	775/710	450
195/70R15C	104/102	R	6	209	655	900/850	450
205/65R15C	102/100	T	6	221	647	850/800	375
215/65R15C	104/102	T	6.5	221	661	900/850	375
215/70R15LT	104/101	R	6.5	221	683	900/825	450
215/70R15C	109/107	R	6.5	228	683	1030/975	450
225/70R15C	112/110	R	6.5	184	697	1120/1060	450
185/75R16C	104/102	R	5	184	684	900/850	475
185/75R16LT	100/97	R	5	201	684	800/730	450
195/65R16C	104/102	R	6	201	660	900/850	475
195/65R16LT	99/96	R	6	196	660	775/710	450
195/75R16C	107/105	R	5.5	196	698	975/925	475
195/75R16LT	102/99	R	5.5	209	698	850/775	450
205/65R16C	107/105	R	6	209	672	975/925	475
205/65R16LT	101/98	R	6	203	672	825/750	450
205/75R16C	113/111	R	5.5	221	714	1150/1090	525
215/60R16C	108/106	T	6.5	221	664	1000/950	475
215/65R16C	109/107	R	6.5	216	686	1030/975	475
215/75R16C	116/114	R	6	216	728	1250/1180	525
215/75R16LT	112/109	R	6	228	728	1120/1030	525
225/65R16C	112/110	R	6.5	240	698	1120/1060	475
235/65R16C	115/113	R	7	188	712	1215/1150	475
185R14C	102/100	R	5.5	198	650	850/800	450
195R14C	106/104	R	5.5	196	666	950/900	450
195R15C	106/104	R	5.5		693	950/900	450



4 wide circumferential grooves with lugs provide effective water drainage, improve security in wet conditions.



Crooked sipes reduce water film a lot and prevent hydroplaning.



Solid uniform tread blocks with circumferential ribs improve straight line stability.



Step grooves floor prevents pebbles



3D steps on shoulder, provides attractive appearance and improves heat dissipation



PracticalMax HT

RS21



Drainage Handling Comfort Safety

HT 越野系列

PracticalMax HT RS21 has excellent performance of handling and silence, is specially designed for city SUV. Stability tread blocks provide super brake performance and excellent handling. It fits both county and city roads, with comfort and silence.

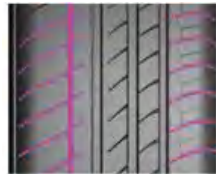
SIZE	Load Index	Speed Rating	Standard Rim	Section Width (mm)	Overall Diameter (mm)	Max.load kg	Max.pressure kpa	U.T.Q.G
235/75R15	105	H	6.5	235	733	925	300	500/A/A
215/70R16	100	H	6.5	221	708	800	300	500/A/A
225/70R16	103	H	6.5	228	722	875	300	500/A/A
235/60R16	100	H	7	240	688	800	300	500/A/A
235/70R16	106	H	7	240	736	950	300	500/A/A
245/70R16XL	111	H	7	248	750	1090	340	500/A/A
255/70R16	111	H	7.5	260	764	1090	300	500/A/A
265/70R16	112	H	8	272	778	1120	300	500/A/A
265/75R16	116	H	7.5	267	804	1250	300	500/A/A
275/70R16	114	H	8	279	792	1180	300	500/A/A
215/65R17	99	H	6.5	221	712	775	300	500/A/A
215/50R17XL	95	H	7	226	648	690	340	500/A/A
225/60R17	99	H	6.5	228	702	775	300	500/A/A
225/65R17	102	H	6.5	228	724	850	300	500/A/A
235/55R17	99	H	7.5	245	690	775	300	500/A/A
235/60R17XL	106	H	7	240	714	950	340	500/A/A
235/65R17XL	108	H	7	240	738	1000	340	500/A/A
245/65R17XL	111	H	7	248	750	1090	340	500/A/A
265/65R17	112	H	8	272	776	1120	300	500/A/A
265/70R17	115	H	8	272	804	1215	300	500/A/A
225/60R18	100	H	6.5	228	727	800	300	500/A/A
235/50R18XL	101	H	7.5	245	693	825	340	500/A/A
235/55R18XL	104	H	7.5	245	715	900	340	500/A/A
235/60R18XL	107	H	7	240	739	975	340	500/A/A
255/55R18XL	109	V	8	265	737	1030	340	500/A/A
265/60R18XL	114	V	8	272	775	1180	340	500/A/A



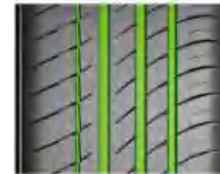
Tapered grooves enhance blocks stability, steady shoulder improves grips.



Asymmetrical design brings excellent .grips, breaking, and better handling.



Semi-closed tread grooves outside the tread, provides silence.



The wide grooves with special compound, enhances efficient water evacuation to deal with all conditions.



PracticalMax H/P

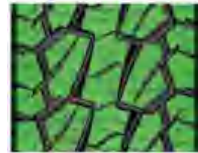
RS26



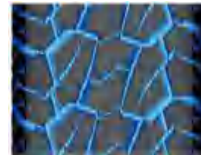
豪华 SUV 系列

PracticalMax H/P RS26 is designed for luxury design, bring the operation of good, strong stability and comfort, with passion and power quality sports style.

SIZE	Load Index	Speed Rating	Standard Rim	Section Width (mm)	Overall Diameter (mm)	Max.load kg	Max.pressure kpa	U.T.Q.G
235/65R17XL	108	V	7	240	738	1000	340	300/AA/A
255/55R18XL	109	W	8	265	737	1030	340	300/AA/A
255/60R18XL	112	V	7.5	260	763	1120	340	300/AA/A
255/50R19XL	107	W	8	265	739	975	340	300/AA/A
255/55R19XL	111	W	8	265	763	1090	340	300/AA/A
275/30ZR19XL	96	Y	9.5	278	649	710	340	300/AA/A
275/35ZR19XL	100	Y	9.5	278	675	800	340	300/AA/A
285/45R19XL	111	W	9.5	285	739	1090	340	300/AA/A
265/50R20XL	111	W	8.5	277	774	1090	340	300/AA/A
275/40R20XL	106	W	9.5	278	728	950	340	300/AA/A
275/45R20XL	110	W	9	273	756	1060	340	300/AA/A
275/55R20XL	117	W	8.5	284	810	1285	340	300/AA/A
275/60R20XL	119	V	8	279	838	1360	340	300/AA/A
245/50ZR20	102	Y	7.5	253	754	850	300	300/AA/A
285/50ZR20XL	116	W	9	297	794	1250	340	300/AA/A
265/45ZR20XL	108	Y	9	266	746	1000	340	300/AA/A
275/30ZR20XL	97	Y	9.5	278	674	730	340	300/AA/A
275/35ZR20XL	102	Y	9.5	278	700	850	340	300/AA/A
315/35ZR20XL	110	Y	11.0	320	728	1060	340	300/AA/A
295/35ZR21XL	107	Y	10.5	301	739	975	340	300/AA/A
295/40ZR21XL	111	Y	10.5	301	769	1090	340	300/AA/A
265/45ZR21	104	Y	9	266	771	900	300	300/AA/A
275/45ZR21XL	111	Y	9	273	782	1090	340	300/AA/A
265/35ZR22XL	102	Y	9.5	271	745	850	340	300/AA/A
285/35ZR22XL	106	Y	10	290	759	950	340	300/AA/A
305/40ZR22XL	114	Y	11.0	313	803	1180	340	300/AA/A
305/45ZR22XL	118	Y	10	303	833	1320	340	300/AA/A
295/30ZR22	99	Y	10.5	301	737	775	300	300/AA/A
285/40ZR23XL	111	Y	10	290	812	1090	340	300/AA/A
295/30ZR23XL	104	Y	10.5	301	762	900	340	300/AA/A
305/35ZR24XL	112	Y	11.0	313	824	1120	340	300/AA/A



3D tiger-teeth tread blocks provide excellent grip for both on and off road.



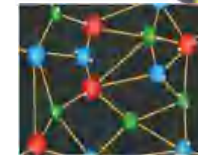
Mixed grooves improve grip in mountain, mud and snow conditions.



Irregular grooves deliver grip off road and super overland capability.



Different depth lateral grooves reduce noise and improve strength of tread blocks.



Special cut resistance compound.



Specially enhanced shoulders prevent damages.

PracticalMax A/T RS23

 Drainage
  Handling
  Off-road
  Safety

AT 越野系列 (全路况)

PracticalMax A/T RS23 is specially designed for all terrain SUV. It enhances the performance of grip and sport, for on or off road use. The tiger-teeth tread blocks provide super overland performance, the cut resistance compound improves mileage much.

SIZE	Load Index	Speed Rating	Standard Rim	Section Width (mm)	Overall Diameter (mm)	Max.load kg	Max.pressure kpa
31X10.5R15LT	109	S	8.5	268	775	1030	350
215/75R15	100/97	S	6	216	703	800/730	350
225/75R15	102/99	S	6	223	719	850/775	350
235/75R15	104/101	S	6.5	235	733	900/825	350
215/70R16	100	T	6.5	221	708	800	300
225/70R16	103	T	6.5	228	722	875	300
235/70R16	106	T	7	240	736	950	300
245/70R16	107	T	7	248	750	975	300
255/70R16	111	T	7.5	260	764	1090	300
275/70R16	114	T	8	279	792	1180	300
215/85R16	115/112	S	6	216	772	1215/1120	550
225/75R16	115/112	S	6	223	744	1215/1120	550
235/85R16	120/116	S	6.5	235	806	1380/1260	550
245/75R16	120/116	S	7	248	774	1380/1260	550
265/70R16	117/114	T	8	272	778	1285/1180	450
265/75R16	123/120	S	7.5	267	804	1550/1400	550
285/75R16	126/123	S	8	286	834	1700A550	550
255/65R17	110	T	7.5	260	764	1060	300
265/65R17	112	T	8	272	776	1120	300
265/70R17	121/118	S	8	272	804	1450/1320	550



PracticalMax H/T RS27

Cross H/T

PracticalMax H/T RS27 Radial tire for pickups, vans and SUVs. Offers great traction on Middle-East terrain. Synchronized comfort on urban off-road and poorly-paved terrain.



4-channel zigzag grooves and lateral grooves provide excellent handling performance under wet road conditions.



Three-dimensional stepped sipes design enhances heat dissipation performance that allows to deal with the blazing hot desert environment easily.



Combination of wide zigzag grooves with multi-directional sipes. maximize performance to expel slush and mud for optimum traction.



Usage of functional material provides excellent cut-resistance and handling, resulting in better adaption to desert use.

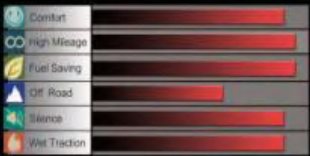
SIZE	Load Index	Speed Rating	Standard Rim	Section Width (mm)	Overall Diameter (mm)	Max.load kg	Max.pressure kpa
255/70R15C	112/110	S	7.5	260	739	1120/1060	375
205R16C	110/108	S	6	208	736	1110/1000	450



COMMERCIAL LTR

BRAWN 2000

LIGHT TRUCK (VAN) TYRE



Three longitudinal "Z" groove design for excellent water drainage and good handling.



Special wear-resistant compound for much longer mileage, dramatically increase the economy.



Wide tread and strong carcass, improve the loading capacity and high speed performance

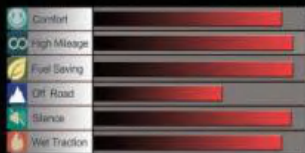
SIZE	Load Index	Speed Rating	Standard Rim	Section Width (mm)	Overall Diameter (mm)	Max.load kg	Max.pressure kpa
185R14C	102/100	S	5.5J	188	650	850/800	475
195R14C	106/104	S	5.5J	198	666	950/900	475



COMMERCIAL LTR

BRAWN BRO1

LIGHT TRUCK (VAN) TYRE



Three longitudinal "S" saw teeth groove design for excellent water drainage and good handling.



Deep pattern + High saturation in contact with the ground + mixed pattern design + Wear resistant compound, for much longer mileage.



Mixed pattern design for Shoulder, effectively reduce noise.

SIZE	Load Index	Speed Rating	Standard Rim	Section Width (mm)	Overall Diameter (mm)	Max.load kg	Max.pressure kpa
165R14C	9*95	S	4.5J	167	2	7*0/690	450
175/75R14C	99/98	S	5.0J	177	618	775/750	475
185R14C	102/100	R	5.5J	188	650	850/800	450
195R14C *WSW	106/104	R	5.5J	198	666	950/900	450
205R14C	109/107	R	6.0J	208	686	1030/975	450
185R15C	103/102	R	5.5J	188	674	875/850	450
★ 215/75R14C	112/110	R	6.0J	216	678	1120/1060	475
195R15C *wsw	106/104	R	5.5J	196	693	950/900	450
195/70R15C	104/102	R	6.0J	201	655	900/850	450
205/70R15C	106/104	R	6.0J	209	669	950/900	450
215/70R15C	104/101	S	6.5J	221	683	900/825	450
★ 225/70R15C	112/110	R	6.5J	228	697	1120/1060	450
★ 235/65R16C	115/113	R	7.0J	240	712	1215/1150	475
★ 215/65R16C	109/107	R	6.5J	221	686	1030/975	475
★ 205/65R16C	107/105	R	6.0J	209	672	975/925	475
★ 195/65R16C	104/102	R	6.0J	201	660	900/850	475
★ 225/65R16C	112/110	R	6.5J	228	698	1120/1060	475
185/75R16C	104/102	R	5.0J	184	681	900/850	475
195/75R16C	107/105	R	5.5J	196	698	975/925	475
215/75R16C	113/111	R	6.0J	216	728	1150/1090	475

★ : under development



All sipes for anti-slipping function enhance tire performance in starting acceleration and braking.



Wide tead design helps optimize contact patch shape, uniform tire contact patch pressure.



Specially treated shoulder profile helps reduce heating up on the shoulder.

SIZE	Load Index	Speed Rating	Standard Rim	Section Width (mm)	Overall Diameter (mm)	Max.load kg	Max.pressure kpa
ST205/75R14	100/96	L	5.5J	203	664	800/710	350
ST205/75R14	105/101	L	5.5J	203	664	925/825	450
ST205/75R15	101/97	L	5.5J	203	689	825/730	350
ST205/75R15	107/102	L	5.5J	203	689	975/850	450
ST225/75R15	113/108	L	6J	223	719	1150/1000	450
ST225/75R15	117/112	L	6J	223	719	1285/1120	550
ST235/80R16	124/120	L	6.5J	235	782	1600/1400	550

WL11

SPORT TRAILER (ST) TYRE

STR

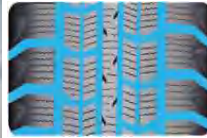




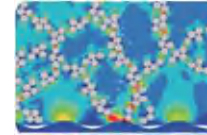
Special pattern design with high density jag sipes make sure the good grip and brake performance on snow or ice covered road.



Four longitudinal grooves design for excellent water drainage and good handling.



Apply for the computer and gene combination simulation design, have the best pattern noise combination, improve vehicle comfort.



Special snow tyre compound and structure design.

SIZE	Load Index	Speed Rating	Standard Rim	Section Width (mm)	Overall Diameter (mm)	Max.load kg	Max.pressure kpa
165/70R13	79	Q	5.00B	170	562	437	350
155/65R13	73	Q	4.50B	157	532	365	300
175/70R13	82	Q	5.00B	177	576	475	300
175/70R14	84	Q	5.0J	177	602	500	300
185/60R14	82	Q	5.5J	189	578	475	350
195/60R14	86	Q	6J	201	590	530	350
165/60R14	75	S	5.0J	170	554	387	300
185/70R14	88	S	5.5J	189	616	560	300
175/65R14	82	Q	5J	177	584	475	300
185/65R14	86	S	5.5J	189	596	530	300
185/65R15	88	Q	5.5J	189	621	560	350
195/65R15	91	Q	6J	201	635	615	350
195/60R15	88	Q	6J	201	615	560	350
195/55R15	85	Q	6J	201	595	515	350
195/70R15C	104/102	Q	6J	201	655	900/850	450
215/75R15	100	Q	6J	216	703	800	300
185/60R15	84	S	5.5J	189	603	500	300
205/65R15	94	S	6J	209	647	670	300
175/65R15	84	Q	5J	177	609	500	300
205/55R16	91	Q	6.5J	214	632	615	350
215/60R16	95	Q	6.5J	221	664	690	300
205/60R16	92	S	6J	209	652	630	300
215/55R16	93	S	7J	226	642	650	300
195/60R16	89	S	6J	201	640	580	300
215/70R16	100	S	6.5J	221	708	800	300
225/70R16	103	S	6.5J	228	722	875	300
225/65R17	102	Q	6.5J	228	724	850	300
215/60R17	96	S	6.5J	221	690	710	300
265/65R17	112	S	8J	272	776	1120	300
235/60R18	103	Q	7J	240	739	875	300



Special pattern design with high density sawtooth lateral groove,make sure excellent grip and brake performance on snow or ice covered road.



Wider pattern design on inner side of shouder to achieve better traction on snow road.



With hundreds of tiny grooves on the tread, fabulous ability to absorb water to refrain aquaplaning.



Brand new 3D pattern designing,20% more space inside of the groove,enhanced mutual support between pattern blocks,better grip performance.

SIZE	Load Index	Speed Rating	Standard Rim	Section Width (mm)	Overall Diameter (mm)	Max.load kg	Max.pressure kpa
★205/65R16	95	T	6.0J	209	672	690	300
225/55R16	95	T	7J	233	654	690	300
225/55R17	97	H	7J	233	680	730	300
215/50R17	95	H	7J	226	684	690	340
225/45R17	94	H	7.5J	225	634	670	340
215/55R17	94	T	7J	226	668	670	300
225/50R17	94	T	7J	233	658	670	300
235/45R17	97	S	8J	236	644	730	340
235/55R17	99	S	7.5J	245	690	775	300
205/50R17	93	H	6.5J	214	638	650	340
215/45R17	91	H	7.0J	213	626	615	340
★205/55R17	95	T	6.5J	214	658	690	340
★225/40R18	92	H	8.0J	230	637	630	340
★215/50R18	92	T	7.0J	226	673	630	300
★255/45R18	103	T	8.5J	255	713	875	340
235/55R18	100	H	7.5J	245	715	800	300
215/55R18	99	H	7J	226	693	775	340
235/45R18	98	T	8J	236	669	750	340
235/50R18	101	H	7.5J	245	693	825	340
245/45R18	96	S	8J	243	677	710	300
255/40R18	99	S	9J	260	661	775	340
245/50R18	104	H	7.5J	253	703	900	340
225/45R18	95	H	7.5J	225	659	690	340
225/50R18	99	H	7J	233	683	775	340
245/40R18	97	H	8.5J	248	653	730	340

★ : under development

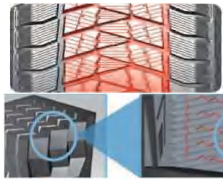


WD69

WINTER TYRE



WINTER



Multiple combination of pattern groove designing, enhance grip ability, safeguard the driving in winter.



Special pattern design with high density sawtooth lateral groove, make sure excellent grip and brake performance on snow or ice covered road.

Brand new 3D pattern designing, 20% more space inside of the groove, enhanced mutual support between pattern blocks, better grip performance.

SIZE	Load Index	Speed Rating	Standard Rim	Section Width (mm)	Overall Diameter (mm)	Max.load kg	Max.pressure kpa
★265/70R16	112	T	8.0J	225	685	710	340
215/65R16	98	S	6.5J	221	686	750	300
235/70R16	106	S	7J	240	736	950	300
225/60R17	99	S	6.5J	228	702	775	300
235/65R17	104	T	7J	240	738	900	300
245/65R17	107	S	7J	248	750	975	300
215/65R17	99	T	6.5J	221	712	775	300
225/55R18	98	S	7J	233	705	750	300
225/60R18	100	S	6.5J	228	727	800	300
245/60R18	105	T	7J	248	751	925	300
265/60R18	110	R	8J	272	775	1060	300
235/65R18	106	T	7J	240	763	950	300
★255/60R18	112	T	7.5J	260	763	1120	340
★225/45R19	96	T	7.5J	225	685	710	340
225/55R19	99	T	7J	233	731	775	300
245/55R19	103	R	7.5J	253	753	875	300
235/50R19	99	T	7.5J	245	719	775	300
245/45R19	102	T	8J	243	703	850	340
255/55R19	107	T	8J	265	763	975	300
255/45R19	100	T	8.5J	255	713	800	300
275/40R19	105	T	9.5J	278	703	925	340
265/50R19	110	T	8.5J	277	749	1060	340
235/55R19	101	T	7.5J	245	741	825	300
255/40R19	100	T	9J	260	687	800	340
275/45R20	106	S	9J	273	756	950	300
235/55R20	102	T	7.5J	245	766	850	300
245/50R20	102	T	7.5J	253	754	850	300
255/50R20	109	S	8J	265	764	1030	340
275/55R20	117	S	8.5J	284	810	1285	340
285/50R20	112	S	9J	297	794	1120	300
245/45R20	103	T	8J	243	728	875	340
275/45R21	110	T	9J	273	781	1060	340
255/45R21	105	T	8.5J	255	763	925	340
275/40R22	107	T	9.5J	278	779	975	340

★ : under development